

# R2021B Assembly Guide

Before Assembling:

- 1.Please check all accessories as below. If there is any shortage, please contact y local distributor.
- 2.Please read assembly guide carefully

Accessory Pack

(1)M2x6mm(H) screw \*5pcs

P/N: 13MISW00003M11



(2)cooper alloy /H: 1.6mm \*5pcs

P/N: 13MICA00001M05

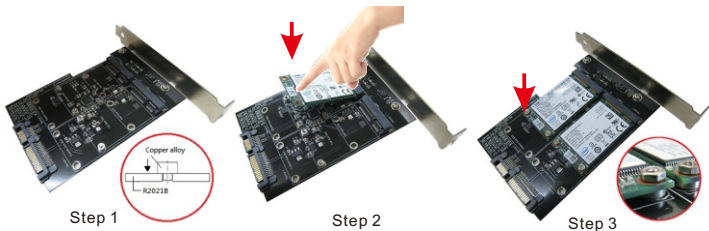


(3)M2nut \*5pcs

P/N: 13MINU00001M11



The above accessories parts are all have extra 1pc for spare part.



mSATA SSD assembly guide

Step 1: Screw (1) M2x6mm & (2) copper alloy on the suitable holes (half/custom/full size ) for your mini PCI-e SSD module as picture-1.

Step 2: Insert your mSATA SSD module to mini PCI-e connector. Press down SDD module as picture-2

Step 3: Screw SSD module with (3) M2 Nut to fix on adapter as picture-3.

-----Two mSATA SSD are using the same installation -----